

1. If damaged be sure to refer repairs to CM-101 dealer.



2. Avoid direct sunlight, electro magnetic waves, and heaters!



3. Be sure the platter is clear before turning on to avoid calibration damage!



4. Don't place near flammable or corrosive gas!



5. Avoid water on the scale, along with humid conditions!



New to scales?

Here's the do's and don'ts!

6.

Don't overload beyond weight limit



7.

Avoid sudden shock to the scale

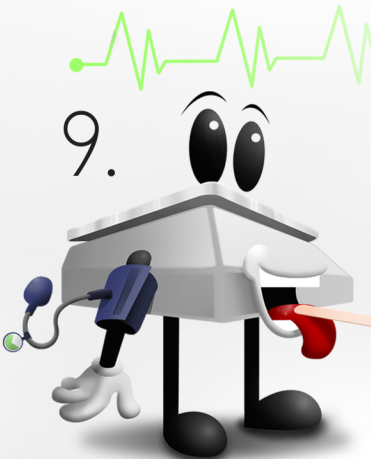


8.

Always lift scale from the base, not the platter!



9.



Periodical checks by authorized dealer helps maintain accurate readings!

10.

Remove batteries when not in use

